

arete Australia
Education Capability Statement 2021

About Us	4
Strength and Security	5
Executive Team Victoria	6
Company Structure	7
Certifications and Accreditations	8
Education	9
Contact	58

arete Australia has quietly built a reputation for delivering highly complex interiors, fitouts and refurbishments.

With offices in Victoria and Queensland, our team has worked on over 220 projects, delivering 160,000sqm across the two states. We have applied our expertise to the education, health, aged care, government, commercial office and base building, hotel and hospitality sectors, delivering impeccable quality on schedule and budget.

As a division of Kane Constructions, we benefit from the financial strength, corporate governance and stringent management systems that this industry leader has refined over its 45+ years of operation.

EXPERIENCED SPECIALISTS

Our success has been built on the dedication, specialist skills and work ethic of our diverse team.

Each member is highly regarded within the industry for an ability to deliver projects of complexity and breadth.

We are also known for being proactive and reactive; we anticipate potential problems and quickly respond to any challenge that may arise.

WELL-BUILT RELATIONSHIPS

Our strong and ongoing relationships with our clients are testament to our commitment and reliability, as much as the exceptional quality of our work.

Through a collaborative and consultative process, we endeavour to understand each client's needs. We then set about creating bespoke solutions that meet design goals, timeframes and budgets.

DEFINING CULTURE

The workplace ethos at arete is one of cooperation, invention and transparency. It defines everything we do, from how we engage with staff to the relationships we build with our clients.

We thrive in a hard-working, collaborative and agile culture. We're dedicated to problem solving and refining our practices. Put simply, we go about what we do, and let our results speak for themselves.

Strength and Security

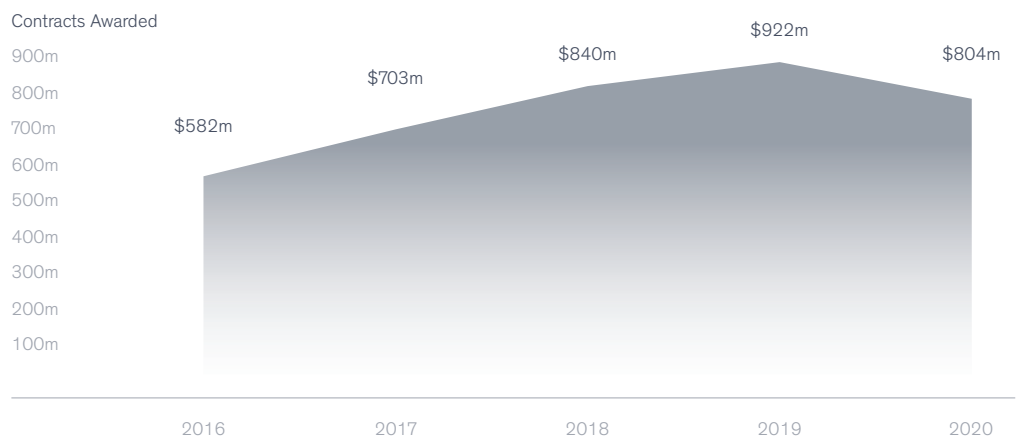
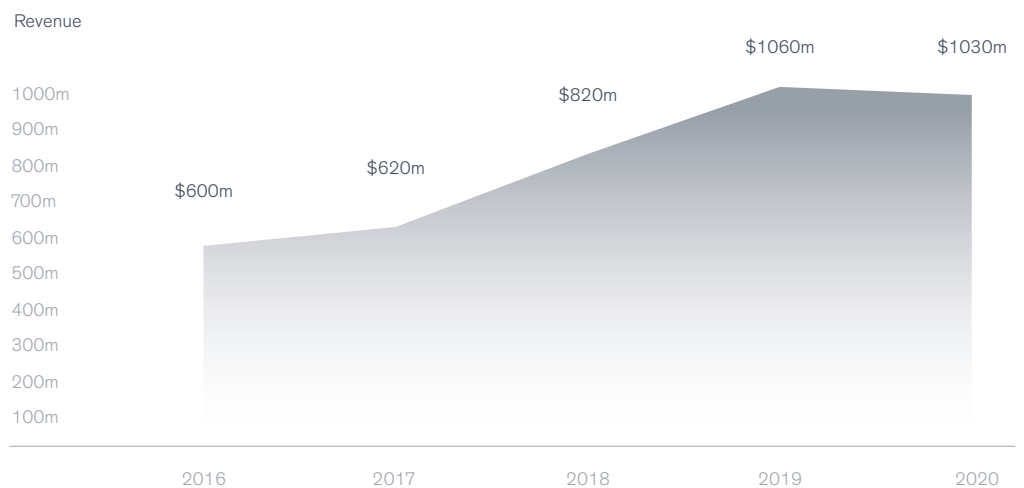
As a division of Kane Constructions, arete Australia benefits from their financial strength.

Annual turnover in excess of \$1 billion.

Projects in the \$1 million to \$250 million value range.

Able to maintain a bank guarantee and bonding facilities of \$80m + \$30m bonding facility from Vero.

Total assets exceeding \$150 million with a security facility to cater for well over \$1 billion of work under construction.



Executive Team Victoria



Richard Frisina

JOINT MANAGING DIRECTOR



Tristan Forster

JOINT MANAGING DIRECTOR



Matt Rossi

JOINT GENERAL MANAGER



Diarmuid O'Mahony

JOINT GENERAL MANAGER



Jonathan Angeloupolos

**BUSINESS DEVELOPMENT
MANAGER**



Sal Palay

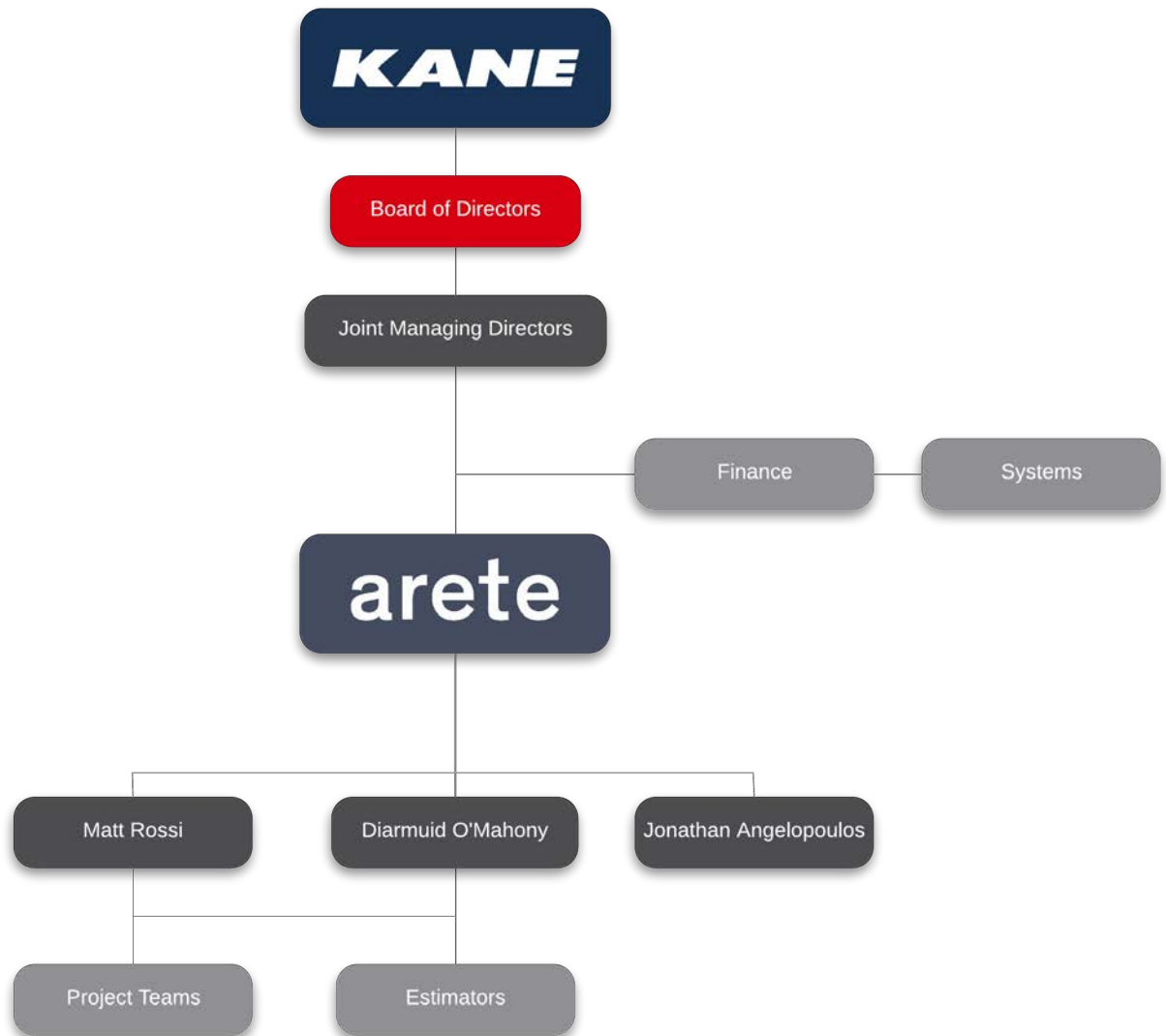
**NATIONAL SYSTEMS
MANAGER**



Stephen Fullarton

CHIEF FINANCIAL OFFICER

Company Structure





Quality Assurance Management System
ISO 9001:2015



Occupational Health and Safety
Management System
ISO 45001:2018



Environmental Management System
ISO 14001:2015



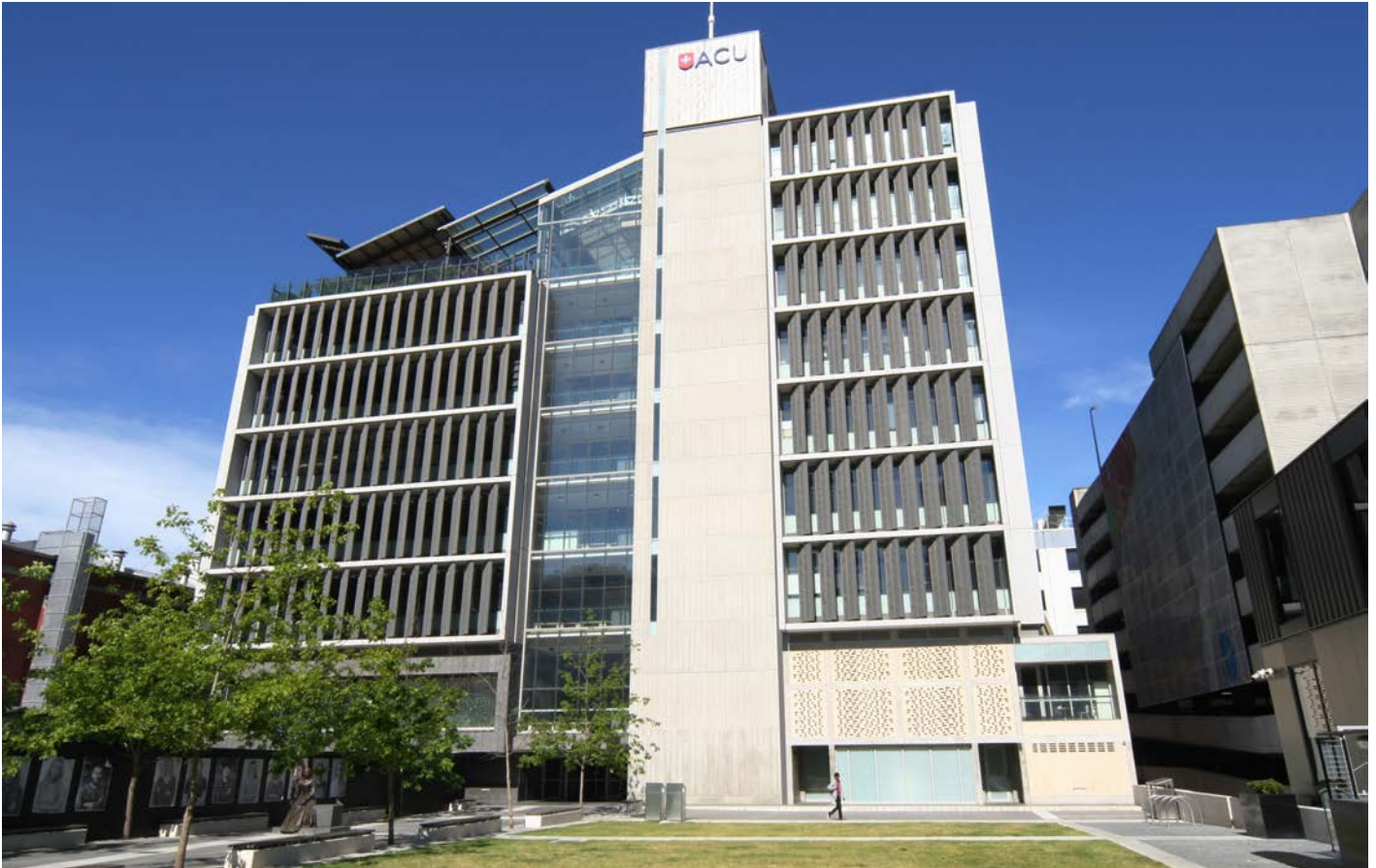
Australian Government Building and
Construction OHS Accreditation Scheme



National Pre-qualification System for
Commercial & Residential Refurbishment
and Office Fitout up to \$138 million -
Construction Supplier Register (CSR)



Education



Australian Catholic University, Daniel Mannix Building Minor Works

The project completed in the Australian Catholic University's Daniel Mannix Building by arete's Victorian team involved the minor works to Levels 2 and 5 of the Building.

There was also minor floor refurbishment works fulfilled within the project.

Works on Level 2 were required to increase and utilise the space for staff and students.

Whilst the works on Level 5 involved a new glazed screen and door to prevent general access to the working area behind the existing reception desk.

KEY PROJECT DETAILS

Education - Tertiary
Lump Sum
Private
Refurbishment

CLIENT

Australian Catholic University

KEY CONSULTANTS

APP
Gray Puksand Architects

VALUE

\$100,000

PROJECT SIZE

300m²

DURATION

1 Month

COMPLETED

February 2016



Box Hill Institute Lilydale Lakeside Campus Building LA

The Box Hill Institute of TAFE's Lilydale Campus Building LA is spread across three wings. Each with three floors, where arete Australia provided a crossover between each wing, for improved accessibility.

The Refurbishment included a new cafe with commercial kitchen, a childcare centre, hair and beauty teaching spaces, general learning spaces, teacher areas, conference and meeting rooms and three libraries across the three floors.

arete successfully delivered the new world class facility for the Box Hill Institute on time and to budget.

KEY PROJECT DETAILS

Education - Tertiary
Lump Sum
Government - State
Refurbishment
Multi Level

CLIENT

Box Hill Institute

KEY CONSULTANTS

Tectura Architects
Calibre Consulting
Waterman AHW (VIC) Pty
Ltd

VALUE

\$3,400,000

PROJECT SIZE

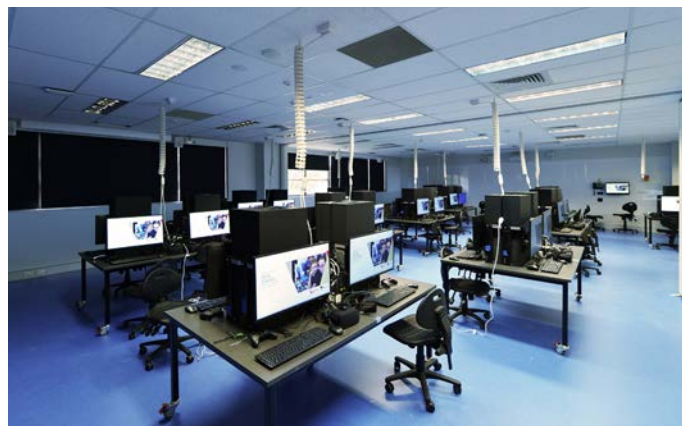
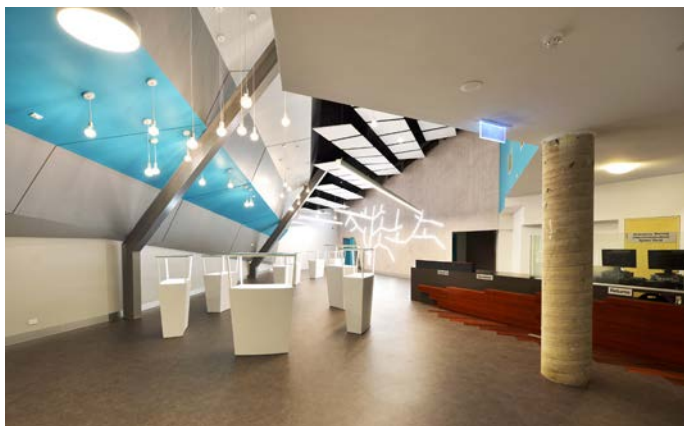
5,422m²

DURATION

8 Months

COMPLETED

April 2017



Box Hill Institute Lilydale Lakeside Campus Building LB

arete Australia were selected to aid the Box Hill Institute of TAFE Lilydale Campus and the Victorian Government with the construction of their very first state-of-the-art Technology, Discovery and Innovation Centre within Victoria.

The works included spaces such as Virtual Reality Rooms, Robotics Rooms, Scenario Rooms and Maker Space Rooms. These spaces enable revolutionary teaching practices and have been architecturally

designed to not only facilitate new functionality but to deliver the aesthetics and design which should be expected from such a ground-breaking space.

KEY PROJECT DETAILS

Education - Tertiary
Lump Sum
Government - State
Refurbishment

CLIENT

Box Hill Institute

KEY CONSULTANTS

Tectura Architects
Calibre Consulting
Waterman AHW (VIC) Pty
Ltd

VALUE

\$1,600,000

PROJECT SIZE

1,500m²

DURATION

6 Months

COMPLETED

February 2017

Chisholm

Chisholm TAFE Dandenong Trade Training Centre

The Trade Centre is a new project for the Dandenong Campus aimed at consolidating and upgrading the delivery of Trade Teaching to provide consistent delivery of these services across Chisholm's campuses.

The specific outcomes of the project are:

- Consolidation of delivery
- Improved teaching facilities
- Increased capacity, flexibility and efficiency

- Meet current training package requirements
- Provide more apprenticeship training
- Provide consistency of offer across campuses

The consolidation of trades at Dandenong will enable similar teaching delivery modes as provided in the Frankston Learning and Innovation Precinct.

KEY PROJECT DETAILS

Education - Tertiary
Lump Sum
Private
Refurbishment

CLIENT

Chisholm Institute of TAFE

VALUE

\$4,257,000

DURATION

Current

KEY CONSULTANTS

Root Partnerships
Crosier Scott Architects
Zinc Cost Management
FMG Engineering
Meinhardt Australia

PROJECT SIZE

2,500m²

COMPLETED

Current Project



Deakin University Building NA

Arete were engaged as principle contractor for the upgrade works to Deakin University's, Waurin Ponds Campus. The new A212 hub connects and centralises the universities Waurin Ponds staff & higher degree research students in a dynamic, bold & engaging location.

The completion of this project enables collaboration within the industry and provides functional dry laboratories & associated workspace environments.

KEY PROJECT DETAILS

Education - Tertiary
Lump Sum
Private
Refurbishment

CLIENT

Deakin University

KEY CONSULTANTS

Deakin Design &
Development
Umow Lai
Building Services BSE
Wallbridge Gilbert Aztec

VALUE

\$1,000,000

PROJECT SIZE

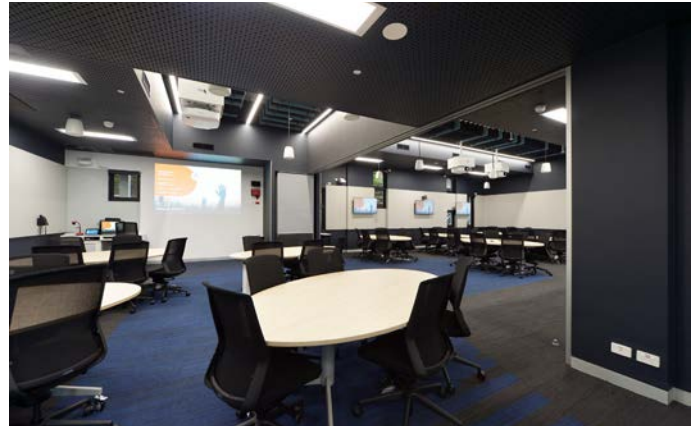
1,370m²

DURATION

3 Months

COMPLETED

March 2021



Deakin University Building HE Fitout

The Deakin University Building HE fitout included the demolished to base build of Level 1 and subsequent fitout of the state-of-the-art Audio Visual Learning environment for the Languages Department.

The classrooms were acoustically treated to reduce services noises and audio reverberation. Deakin University requested the original brief to be updated to meet their standards and therefore additional safety and technological requirements were required to be installed.

Level 2 was partially demolished and refurbished to allow for a new Comms Room, where all services from Level 1 are monitored.

Overall the project was a success having been delivered on time and within budget.

KEY PROJECT DETAILS

Education - Tertiary
Lump Sum
Private
Fitout

CLIENT

Deakin University

KEY CONSULTANTS

DS Architects
Cundall
WSP | Parsons Brinckerhoff
Wood & Grieve Engineers

VALUE

\$1,000,000

PROJECT SIZE

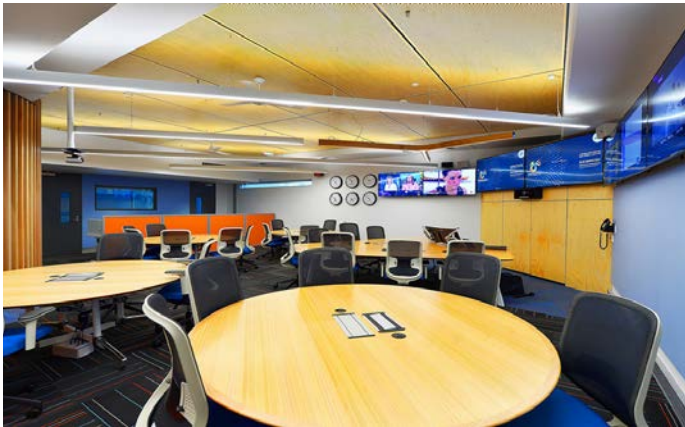
225m²

DURATION

4 Months

COMPLETED

February 2018



Deakin University
Building P ‘News Room’

The Building P News Room project was comprised of four major components: The Green Room, Neutral Printing Room, News Room and teaching spaces, all of which were spread across three levels.

The Neutral Printing Room was the first milestone of this project, being painted and fitted out with neutral grey colour to fulfill its purpose. Students and staff utilise this room to edit and print their work using the full size printer. The main feature for this space is the special lighting boxes, integrated with magnetic boards, which can be calibrated

to present the actual photos as seen on the computer screen.

The news room on Level 3 saw the use of high-end designer furniture with full services coordination to support the purpose of news recording. The room was refurbished to meet specific acoustic requirements with services being fully integrated to Deakin's e-solution.

Also situated on Level 3 are new teaching spaces that utilise the latest AV technology, which enrich the teaching and learning experiences.

KEY PROJECT DETAILS

Education - Tertiary
Lump Sum
Private
Fitout

CLIENT

Deakin University

KEY CONSULTANTS

Buro

VALUE

\$1,500,000

PROJECT SIZE

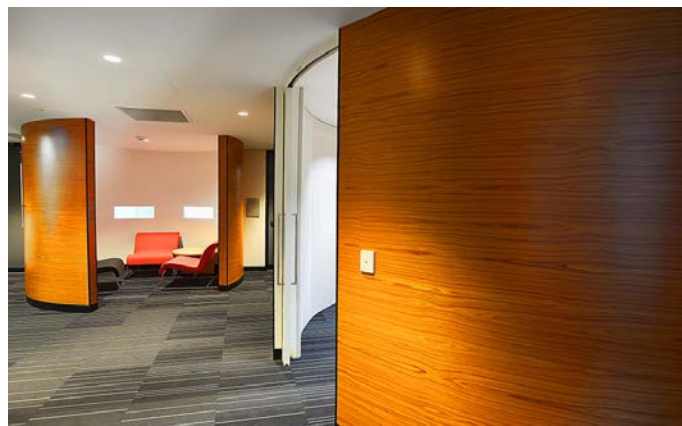
503m²

DURATION

7 Months

COMPLETED

March 2017



Deakin University Building C Backlog

arete Australia completed the Deakin University's Building C Back-log works across Levels 1, 2, 3, 4 and 5.

The works included new floor finishes, ceiling tile replacements, new joinery items and make good of the existing office and toilet areas.

The challenge with this project was meeting the handover for Levels 4 and 5 as the existing furniture needed to be reworked within the small space.

KEY PROJECT DETAILS

Education - Tertiary
Lump Sum
Private
Multi Level
Refurbishment

CLIENT

Deakin University

KEY CONSULTANTS

Buro

VALUE

\$800,000

PROJECT SIZE

2,000m²

DURATION

4 Months

COMPLETED

March 2017



Deakin University Student Central Building HE

Deakin University's Building HE Level 2 is the new Student Central space for their Burwood Campus.

The student central is the new highlight in the Burwood Campus and is now the face of Deakin with the design becoming the benchmark for all future projects.

The project presented full services coordination between the front and the back house, with works establishing the Ask Watson desk, which gives a fresh experience to students who require a consultation.

The project also included upgraded services zone with private and semi-private consultation points, meeting rooms and offices and refurbished staff areas at the back-of-house.

The original scope of the project was finished within two months, because of great coordination between site personnel, office and stakeholders.

KEY PROJECT DETAILS

Education - Tertiary
Lump Sum
Private
Fitout

CLIENT

Deakin University

KEY CONSULTANTS

Thomson Adsett

VALUE

\$1,600,000

PROJECT SIZE

427m²

DURATION

5 Months

COMPLETED

February 2017



Deakin University Building P Backlog

Deakin University's Building P Back-Log project was delivered in conjunction with the Building P Media and News Room.

The refurbished space is mainly used for news, broadcast and media purposes with works including but not limited to painting, floor replacements, studios, arts and also joinery items replacement.

Given that each area had different specific periods to work with, site management played a crucial role in the successful delivery of this project within the specified programme and in the most efficient way possible.

KEY PROJECT DETAILS

Education - Tertiary
Lump Sum
Private
Refurbishment

CLIENT

Deakin University

KEY CONSULTANTS

Buro
Cundall

VALUE

\$600,000

PROJECT SIZE

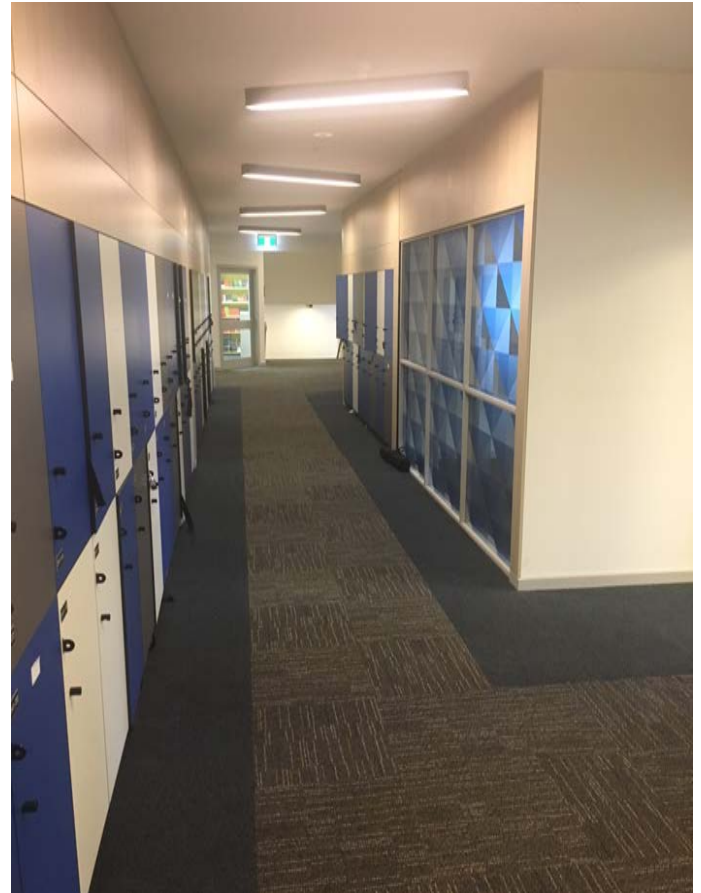
826m²

DURATION

4 Months

COMPLETED

February 2017



King David School Refurbishment

The King David School Refurbishment was delivered by arete Australia in three stages, the project included full demolition of internal non load bearing walls, new openings for sliding doors and windows in existing masonry walls and the completion of new security guardhouse and hydrant booster with high grade security bollards installed.

Two levels were redesigned to incorporate open learning areas, offices, work rooms, a Jewish life and Hebrew space, independent study areas, resource centre, quiet room, amenities for staff and students and upgrade works to both the heritage staircase and external balcony.

KEY PROJECT DETAILS

Education - Primary & Secondary
Lump Sum
Private
Refurbishment

CLIENT

The King David School

KEY CONSULTANTS

ClarkeHopkinsClarke
Cosentino Group
McCormack Associates
Consultants Pty Ltd

VALUE

\$2,740,000

PROJECT SIZE

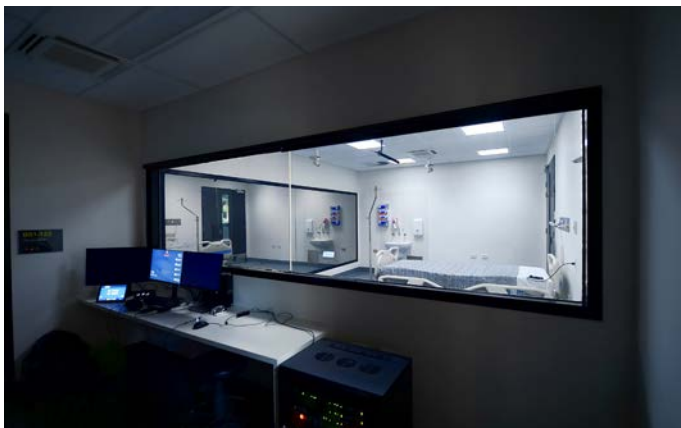
1,680m²

DURATION

8 Months

COMPLETED

May 2018



La Trobe University School of Nursing BS1

arete have recently been awarded the \$1.5m La Trobe University BS1 School of Nursing Upgrade project.

The project involves the demolition including extensive hazardous materials removal & fit out of an existing 550sqm floor plate on Level 1 of Biological Sciences Building 1 at their Bundoora campus which will provide the University's School

of Nursing with a modern & state of the art Nursing Simulation Space for the 2021 teaching year and beyond.

The on-site duration was always noted as aggressive in order to meet their expected Semester #1 commencement date with students scheduled to commence on campus learning in the first week of March. As such the project has been approached with an 'all hands on deck' attitude from all parties with clients, consultants and trades all working closely to ensure progress is maintained on site. This has meant numerous weekly meetings, prompt reviews and adjustments to shop drawings and

technical data sheets and near immediate responses to project related RFI's.

Being constructed to a hospital grade finish due to the intended function of the space has also meant there has been a large focus on coordination of the technically complex services, including mechanical, medical gases, electrical and medical panels and the AV teaching system while also ensuring the finishes are installed to the same exacting standards.

KEY PROJECT DETAILS

Education - Tertiary
Lump Sum
Private
Refurbishment

CLIENT

La Trobe University

VALUE

\$1,491,379

DURATION

4 Months

KEY CONSULTANTS

Billard Leece Partnership
Umow Lai

PROJECT SIZE

536m²

COMPLETED

March 2021



Melbourne Indigenous Transition School Girls Boarding House

In March 2019, arete Australian & Kane Constructions were invited to participate in the MITS Alumnae Boarding House Project through their relationship with the University of Melbourne. The objective of the MITS Project was to provide a home for 18 young indigenous girls whilst they pursue their education across Melbourne

The scope of works included a high end refurbishment / fit out of an existing heritage building located within the inner suburbs of Richmond. The existing two level building was extended to include a mezzanine floor. The MITS building now

includes bedrooms including an ensuite and study, student bathrooms, a commercial kitchen and cool room, dining / living rooms, a breakout space, games room, laundry and store rooms.

External works comprised of partial restoration to the building's façade, plant platform and acoustic screening, replacement of existing windows, installation of skylights, landscaping and associated irrigation works, new fences / gates and a new monitored security system.

KEY PROJECT DETAILS

Residential - Single
Lump Sum
Private
Multi Level
Refurbishment

CLIENT

Melbourne Indigenous
Transition School

KEY CONSULTANTS

Mcildowie Partners
GHD Pty Ltd

VALUE

\$2,677,840

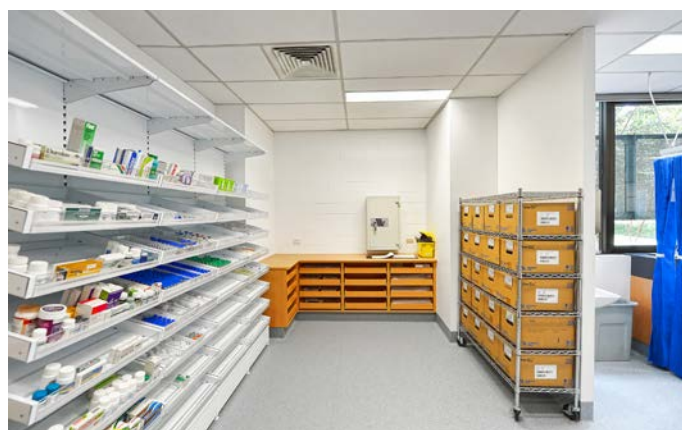
PROJECT SIZE

DURATION

5 Months

COMPLETED

January 2020



Monash University Nursing Faculty Simulation Space

arete were engaged by Monash University to complete the refurbishment of Building E at their Peninsula Campus.

The project included the complete upgrade of the Nursing faculties p-program rooms, creating a simulated hospital environment.

The project was completed in four stages to all for the space to still be functional and classes to continue with minimal disruption.

Works consisted of demolition within each stage, removing old simulation labs, offices and storage rooms to create a new layout which allows for more hospital beds.

Each room has new services, including medical gases and nurse call, new vinyl flooring, joinery, fitting and fixtures, beds, curtains, and painting.

KEY PROJECT DETAILS

Education - Tertiary
Lump Sum
Private
Fitout

CLIENT

Monash University

KEY CONSULTANTS

GHD Pty Ltd

VALUE

\$1,340,000

PROJECT SIZE

797m²

DURATION

9 Months

COMPLETED

March 2019



Monash University Physio Faculty Gym Refurbishment

The Refurbishment of the Monash University Physio Faculty Gym saw the existing Sports Gym located at their Peninsula Campus, transformed into three large teaching spaces that would accommodate 24 students each, for the purposes of physiotherapy education.

The existing site conditions presented asbestos in the subfloor and existing mechanical ducting and also required extensive refurbishment work to bring it up to a higher finish.

The new fitout included a structural steel frame that supported the ceiling and services to all training rooms. Major refurbishment to the existing flooring and subfloor, reworking of Mechanical and Electrical Services, new AV and Hydraulic Services, new vanity units with splashbacks, re-surfaced finishes (Carpet, Vinyl, Painting, Pinboards), installed new FF&E (Whiteboards, Plumbing fixtures) and erected new full height internal partitions.

KEY PROJECT DETAILS

Education - Tertiary
Lump Sum
Private
Refurbishment

CLIENT

Monash University

KEY CONSULTANTS

Jackson Clements Burrows
Architecture
GHD Pty Ltd

VALUE

\$600,000

PROJECT SIZE

430m²

DURATION

3 Months

COMPLETED

February 2018



Monash University MADA Refurbishment

arete Australia completed the 1,000m² refurbishment of the Monash University Art Design and Architecture (MADA) centre on time and on budget.

The works featured a raw, industrial element for the space, whilst incorporating the heavily architecturally inspired refurbishment of the student work spaces and learning areas.

KEY PROJECT DETAILS

Education - Tertiary
Lump Sum
Private
Refurbishment

CLIENT

Monash University

KEY CONSULTANTS

NMBW Architecture Studio
BCS Building Consulting
Services Aust.

VALUE

\$500,000

PROJECT SIZE

1,000m²

DURATION

4 Months

COMPLETED

February 2016



RMIT University Simulation Health Facility

arete completed work on the new RMIT University Simulated Health Ward project in 2020. We worked closely with RMIT University, Root Partnerships, Vincent Chrisp Architects and Waterman Group to deliver the new 52 bed nurse training facility.

The project was completed ahead of Semester 2 commencing, and teaching in the new space is already underway.

Works included a state-of-the-art of hospital simulation ward, nursing labs, technical support areas, clinical preparation practice area, training bathroom and a simulation debrief area which is being used for community and mental health scenarios.

KEY PROJECT DETAIL

Education - Tertiary
Lump Sum
Private
Fit out

CLIENT

RMIT University

KEY CONSULTANTS

Vincent Chrisp Architects
Root Partnerships
Watermans Group

VALUE

\$5,400,000

PROJECT SIZE

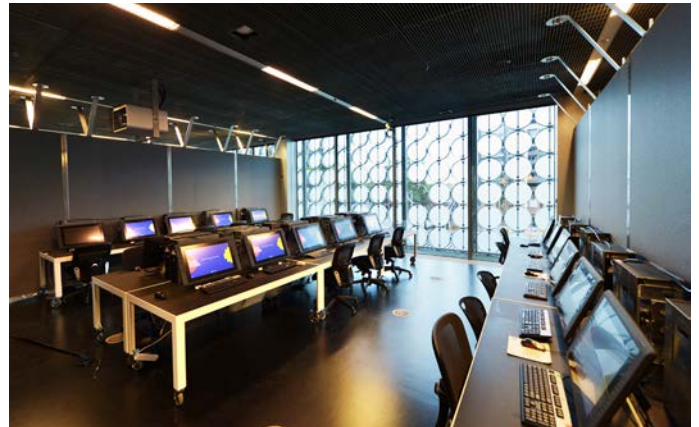
2,271m²

DURATION

5 Months

COMPLETED

May 2020



RMIT University Design Hub

arete Australia was engaged by RMIT University to aid in the delivery of a new campus for the School of Architecture.

A complete re-fit to the existing RMIT Design Hub Building 100 to accommodate the School of Architecture staff and students saw arete working with three separate architecture practices across the buildings 10 floors including many new staff, student and teaching spaces in addition to a new workshop and robotics workshop.

The project delivered integral requirements for the School of Architecture whilst ensuring each space was delivered with the architectural integrity as is only fitting for the RMIT School of Architecture.

KEY PROJECT DETAILS

Education - Tertiary
Construction Management
Private
Fitout

CLIENT

RMIT University

KEY CONSULTANTS

March Studios
MAKE Architecture
Searl X Waldron

VALUE

\$5,390,000

PROJECT SIZE

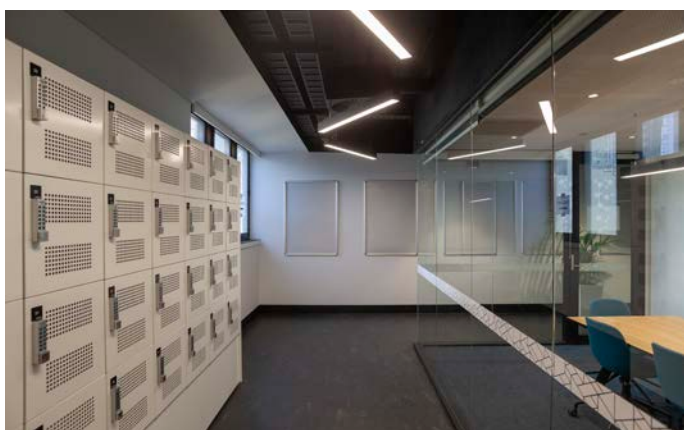
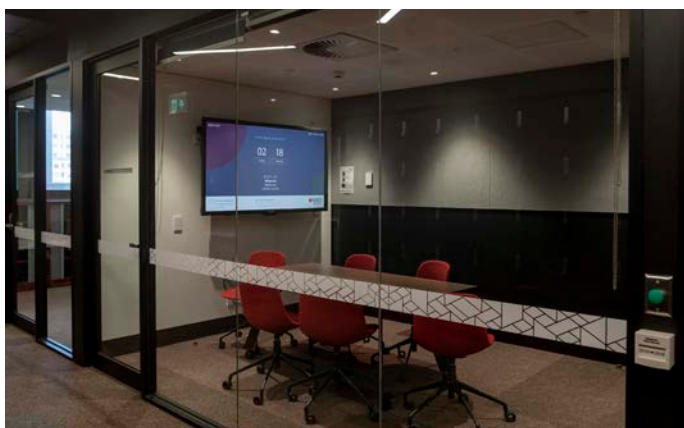
13,000m²

DURATION

7 Months

COMPLETED

May 2019



RMIT University SEH Future College Implementation Project

arete Australia were selected to partner with RMIT, Root Partnerships, Hinge Architects and Watermans on the multi-site RMIT SEH Project.

The project initially comprised of 10 floors of staff and student teaching and office spaces, spread across 7 buildings. Part way into the project an additional 2 floors of fit-out were added.

A large team from arete delivered this project from a central hub within RMIT, in close proximity to the worksite. Having a large team enabled arete to ensure the project was delivered to an exceptionally high standard.

arete successfully delivered all floors on time with 9 of the 12 being delivered ahead of schedule.

KEY PROJECT DETAILS

Education - Tertiary
Lump Sum
Private
Fitout
Refurbishment
Multi Level

CLIENT

RMIT University

KEY CONSULTANTS

Hinge Architects

VALUE

\$13,600,000

PROJECT SIZE

4,855m²

DURATION

6 Months

COMPLETED

April 2019



RMIT University
Global Urban & Social
Studies (GUSS) Co-Location
Project

arete completed the early works demolition and removal of the existing Building 8, Level 11 office area for RMIT University.

The works were undertaken within an active university environment and completed with zero disruption to the university and public.

KEY PROJECT DETAILS

Education - Tertiary
Design & Construct
Private
Fitout
Refurbishment

CLIENT

RMIT University

KEY CONSULTANTS

Spowers Architects
Root Partnerships

VALUE

\$300,000

PROJECT SIZE

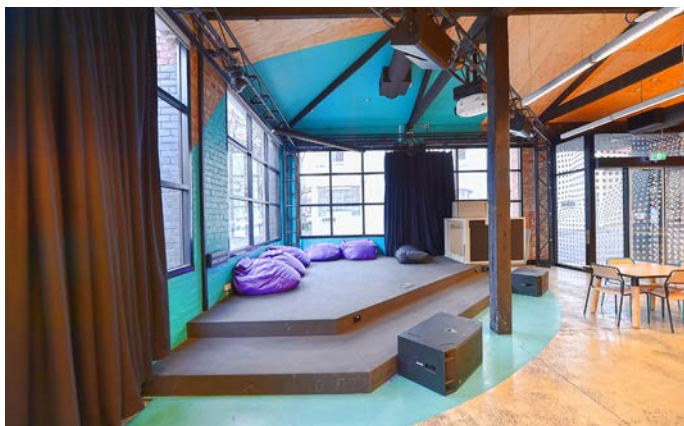
1,600m²

DURATION

3 Months

COMPLETED

August 2018



RMIT University RUSU After Dark

In Mid-2018 arete completed the refurbishment of RMIT's RUSU After Dark facility at their Melbourne City campus.

modifications to the kitchenette bench area and storage cupboards as well as alterations to existing Services

The project involved of the refurbishment of Buildings 78 & 89 to create a new performance stage complete with stage truss and central circular truss, Black woolen drapes, Acoustic treatment to ceilings and walls, Wet area bench and perimeter wall installations, soft fabric cushion furnishings to benches and minor

KEY PROJECT DETAILS

Education - Tertiary
Construction Management
Private
Refurbishment

CLIENT

RMIT University

KEY CONSULTANTS

Odorisio & Stolfo Architects
Slattery Australia

VALUE

\$270,000

PROJECT SIZE

288m²

DURATION

1 Month

COMPLETED

August 2018



RMIT University College of Business Growth Building 88 Level 3

The fitout and refurbishment works to RMIT Building 88, Level 3, included the creation of new office accommodation.

Within the works completed there were open plan office spaces, collaborative areas, meeting rooms, offices, executive meeting room, which doubles as a class room, and a kitchenette area.

The space required a full services strip out and install, involving extensive mechanical services works, new electrical installation including communications room and fire services upgrade.

RMIT refurbished the space for the accommodation of College of Business academics and researchers.

KEY PROJECT DETAILS

Education - Tertiary
Construction Management
Private
Refurbishment
Fitout

CLIENT

RMIT University

KEY CONSULTANTS

H2o Architects
Lucid Consulting Australia
Nelson McDermott

VALUE

\$2,600,000

PROJECT SIZE

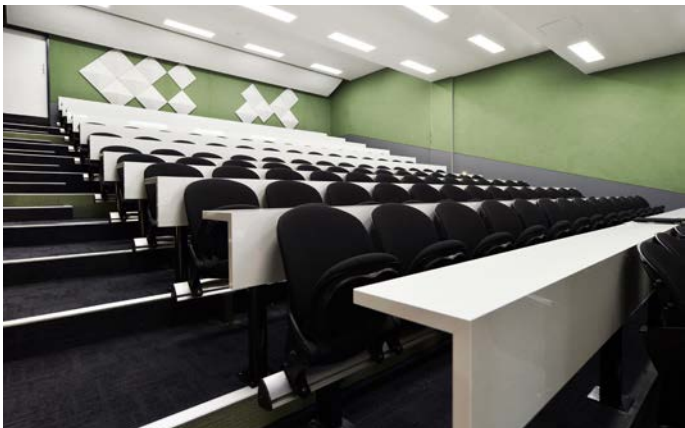
1,600m²

DURATION

5 Months

COMPLETED

April 2018



Swinburne University
EN Lecture Theatre
Refurbishment

arete were engaged by Swinburne University of Technology to complete the refresh of the Lecture Theatres within the Engineering Building (EN) at their Hawthorn Campus. The refresh included EN313, EN413 & EN715 located on levels 3, 4 & 7 respectively.

The purpose of the works was to refresh the lecture theatres with new paint, re-cover existing chairs, re-laminate benches, replace entry doors and all lighting with new LED and re-carpet throughout. The Lecture Theatres were completed for use in Semester 1, 2019.

KEY PROJECT DETAILS

Education - Tertiary
Lump Sum
Private
Fitout
Refurbishment

CLIENT

Swinburne University of
Technology

KEY CONSULTANTS

DS Architects
HR Consulting Engineers

VALUE

\$700,000

PROJECT SIZE

383m²

DURATION

4 Months

COMPLETED

February 2019



Swinburne University Concrete Printing Labs

arete completed the fitout of a lab space for Swinburne University at the ATC building in Hawthorn, in preparation for the installation of a state of the art 3D concrete printer.

A high level of coordination was required to ensure the newly installed building services are compatible with the equipment being installed. Services works undertaken include extensive electrical, exhaust air, hydraulic, and mechanical installations.

To manage the silt and solids generated in

the concrete printing process, large silt pits with drainage to below were required to be installed into the lab area's suspended slab. This required large steel beams to be installed under the slab in an occupied lab area. This required a high amount of coordination and consultation with the client, and a large logistical effort was required to not only transport the large beams into the works area, but also install them to the underside of the suspended slab around a large amount of existing services.

KEY PROJECT DETAILS

Education - Tertiary
Lump Sum
Private
Fitout

CLIENT

Swinburne University of
Technology

KEY CONSULTANTS

H2o Architects

VALUE

\$500,000

PROJECT SIZE

281m²

DURATION

4 Months

COMPLETED

September 2018



Swinburne University Building EN Level 6

This project involved the refurbishment of 481m² of new office space and kitchen/ staff room.

The space, located on level 6 of the EN Building within the Swinburne University of Technology Hawthorn Campus, was upgraded to provide executive office space for the Faculty Pro Vice-Chancellor for Science, Engineering and Technology, the Executive Team and support staff.

KEY PROJECT DETAILS

Education - Tertiary
Lump Sum
Private
Fitout
Refurbishment

CLIENT

Swinburne University of
Technology

KEY CONSULTANTS

NTC Architects

VALUE

\$460,000

PROJECT SIZE

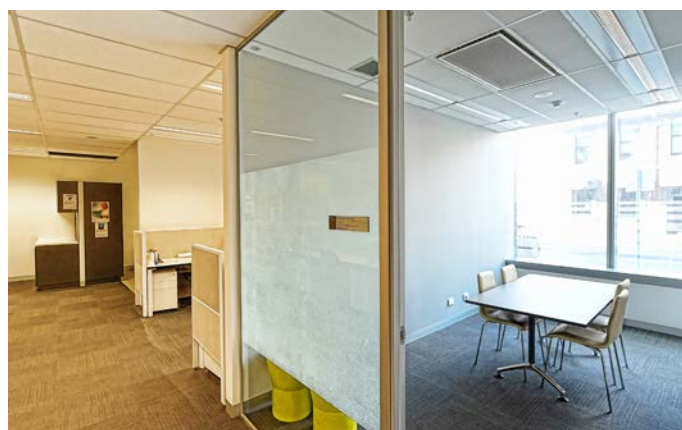
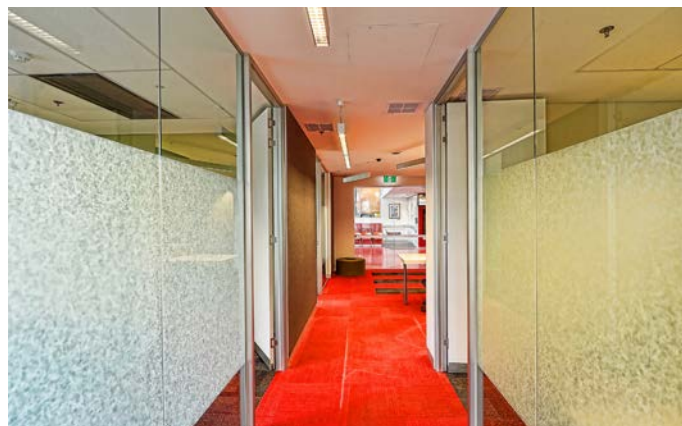
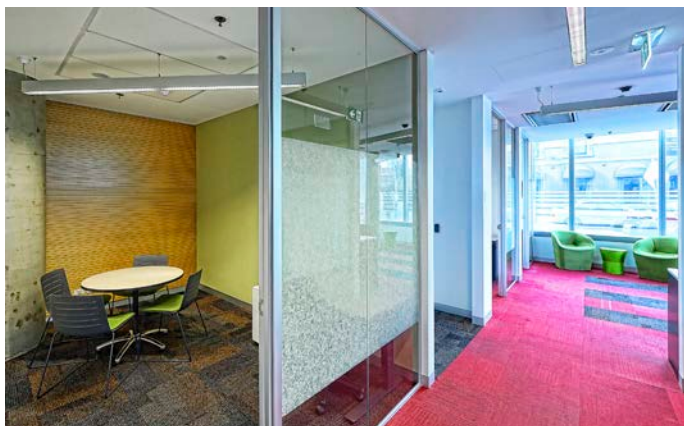
481m²

DURATION

2 Months

COMPLETED

August 2018



Swinburne University AMDC Student Information Centre

Swinburne University AMDC Student Information Centre project comprised the refurbishment of the Student Services Office. The works undertaken included the construction of three interview rooms, the installation of a new reception desk and minor workstation changes and some aesthetic upgrades to floor and wall finishes.

The project was delivered early and the client had an easy transition into their new space.

KEY PROJECT DETAILS

Education - Tertiary
Lump Sum
Private
Fitout
Refurbishment

CLIENT

Swinburne University of
Technology

VALUE

\$230,000

DURATION

1 Month

PROJECT SIZE

239m²

COMPLETED

June 2018

KEY CONSULTANTS

Jacobs Engineering Group
Arch Electrical Group



Swinburne University TB Level 3

arete Australia was engaged to carry out the refurbishment for Swinburne University's TB Building at their Hawthorn Campus.

open plan office space with meeting rooms. This included new glazed partitions and doors to either side of hallway.

The TB Building (Health, Science and Community Departments) had 9 existing offices which were transformed into a single

KEY PROJECT DETAILS

Education - Tertiary
Lump Sum
Private
Fitout

CLIENT

Swinburne University of
Technology

KEY CONSULTANTS

dwp
Bestec Pty Ltd
Michel Group

VALUE

\$250,000

PROJECT SIZE

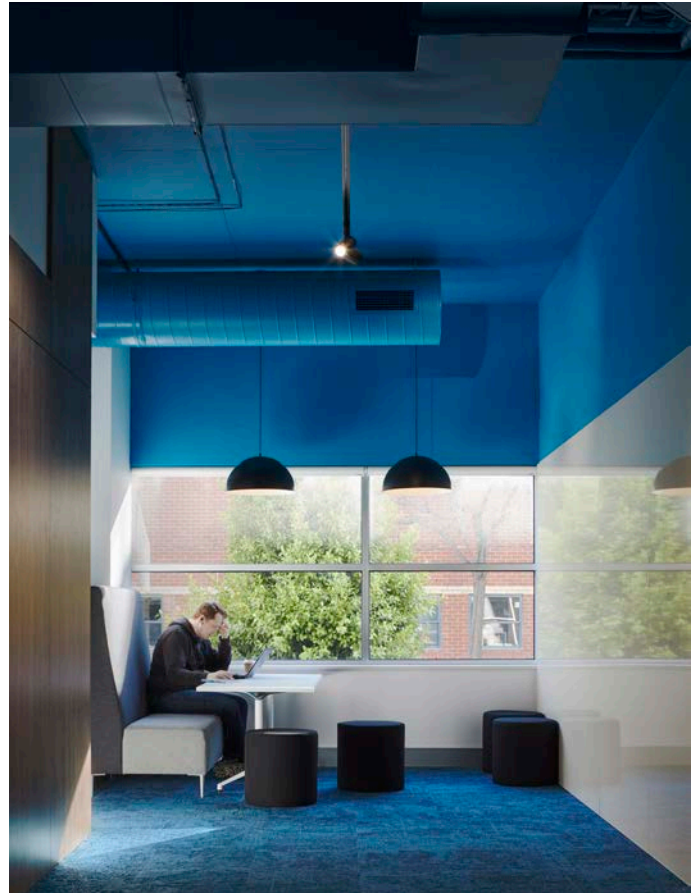
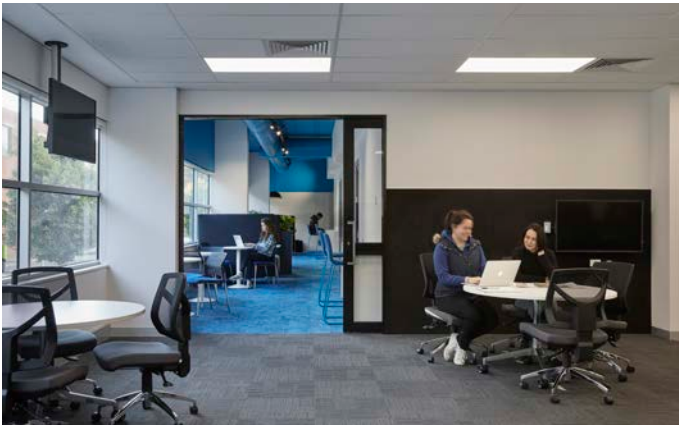
237m²

DURATION

1 Month

COMPLETED

September 2017



Swinburne University Graduate School of Entrepreneurship

Swinburne University elected to undertake the long awaited upgrade to the Australian Graduate School of Entrepreneurship in 2017. The project totalled over 1,700m² of state-of-the-art tertiary fit-out which was delivered across 2 levels of live teaching space.

This staged project produced better teaching and office facilities, a new lecture theatre and includes new-build meeting / breakout space pods.

KEY PROJECT DETAILS

Education - Tertiary
Lump Sum
Private
Fitout
Multi Level

CLIENT

Swinburne University of
Technology

KEY CONSULTANTS

Spowers Architects
Wilde and Woollard Pty Ltd
Taylor Thomson Whittling
Pty Ltd

VALUE

\$2,500,000

PROJECT SIZE

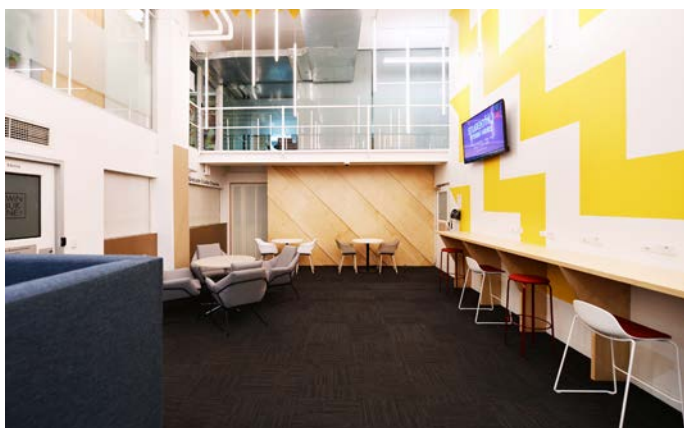
1,700m²

DURATION

4 Months

COMPLETED

August 2017



Swinburne University Mezzanine & L1, EN Building Refurbishment

Following our successful Swinburne AGSE Project, arete was invited to tender, and subsequently won, the Swinburne EN Refurbishment Project.

Spread over two floors arete were engaged to reinvent the previously dark office space into a vibrant new staff office area.

There were high levels of finish detail throughout this project including Ampelite screens, custom fabricated acoustic baffles, timber veneer wall and ceiling panels and a custom arrangement of feature lighting.

KEY PROJECT DETAILS

Education - Tertiary
Lump Sum
Private
Multi Level
Fitout

CLIENT

Swinburne University of
Technology

KEY CONSULTANTS

Brent Architecture
Michel Group

VALUE

\$500,000

PROJECT SIZE

550m²

DURATION

3 Months

COMPLETED

August 2017



The University of Melbourne
School of Agriculture &
Food BN194 Main Works

As a result of the WEBS 1 project, increasing student demand and increasing research activity, the Faculty has a major accommodation problem. This can be addressed by refurbishing existing space in Building 194 (Old Genetics). Most of this building was recently vacated by the Faculty of Science. The proposed solution will deliver a Food Science Teaching and Research hub in B194 in a reasonable time.

L2, L3 and Building BN184 GF and L2 labs to create 1,500m² accommodation space for the Food Science Teaching and Research hub.

Scope included fitout of Building 194 L1,

KEY PROJECT DETAILS

Education - Tertiary
GMP
Private
Refurbishment

CLIENT

The University of
Melbourne

KEY CONSULTANTS

Hassell
ARUP
ADP Consulting

VALUE

\$10,719,329

PROJECT SIZE

1,500m²

DURATION

7 Months

COMPLETED

October 2020



The University of Melbourne BN122, L2, Microbio Symbiosis Laboratory (MSL)

Arete completed a full strip out of an existing lab with a mezzanine office level. A new BC2 compliant laboratory was created on level 1 with an office space on the mezzanine.

The fit out included all new partitions ceilings, internal walls & doors. Full services upgrades including; mechanical, lab gases, electrical, hydraulic and fire. New joinery, overhead units, service ducts and cabinetry was installed throughout.

To ensure compliance with the PC2 authority we installed two ante rooms and air locks.

KEY PROJECT DETAILS

Education - Tertiary
Lump Sum
Private
Refurbishment

CLIENT

The University of
Melbourne

KEY CONSULTANTS

Scarborough Architects
Slattery Australia
Umow Lai
Design Guide Building
Surveyors

VALUE

\$1,117,000

PROJECT SIZE

214m²

DURATION

4 Months

COMPLETED

July 2020



The University of Melbourne Department of Optometry and Vision Sciences

The Department of Optometry and Vision Sciences refurbishment was one of the first projects to be delivered under the University of Melbourne Framework agreement.

The building, which previously consisted of physiotherapy labs, lecture theatres and workspaces was demolished and transformed into one of the state's most advanced Optometry and Vision Education centres.

The project consisted of \$18.5m worth of new Optometry teaching labs, treatment rooms, Nursing simulation labs, new Mechanical, Fire protection, hydraulic, electrical and AV services.

KEY PROJECT DETAILS

Education - Tertiary
Design & Construct
Private
Refurbishment

CLIENT

The University of
Melbourne

KEY CONSULTANTS

Broadspectrum
Aurecon
Hassell
WT Partnership

VALUE

\$14,500,000

PROJECT SIZE

4,600m²

DURATION

10 Months

COMPLETED

June 2020



The University of Melbourne Bio21 Level 4 Refurbishment

Bio21 Level 4 was a laboratory fitout on the west wing of the David Penington Building (B102). We worked closely with the project consultants Scarborough Architects and Umow Lai to complete this project for The University of Melbourne.

The scope of works included the supply and install of a new coolroom, new benches, sinks, removable overhead shelving and new joinery, alterations to existing Lab

Gases and removal and make good of existing Fume Cupboards.

Due to COVID -19 restrictions, the project stakeholders were unable to attend the site during construction. Communication was only via Aconex through RFI's. John Bonaventura from Scarborough Architects was very responsive, this allowed the project to maintain a good pace.

KEY PROJECT DETAILS

Education - Tertiary
Lump Sum
Private
Fit-out

CLIENT

The University of
Melbourne

KEY CONSULTANTS

Scarborough Architects

VALUE

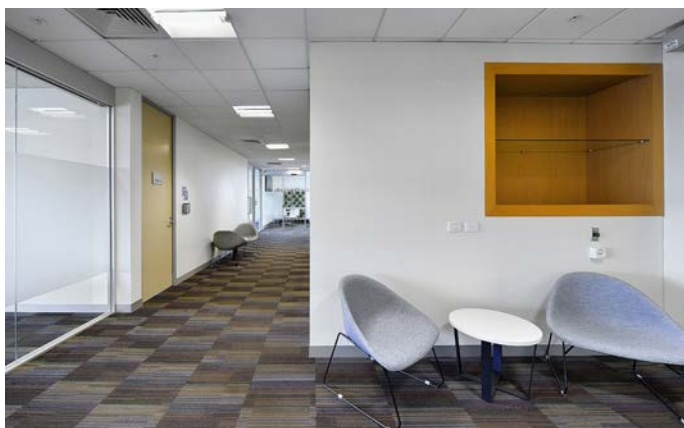
\$540,000

DURATION

3 Months

COMPLETED

June 2020



The University of Melbourne BN281 204 Lygon Street

Refurbishment of level 5 office spaces leased by UOM covering an area of approx. 650m², whilst the existing office in the eastern area of the floor remain occupied. The fitout works include relocation of existing & new services, partitions, wall finishes and new workstations.

KEY PROJECT DETAILS

Education - Tertiary
Lump Sum
Private
Fitout

CLIENT

The University of
Melbourne

KEY CONSULTANTS

Vincent Crisp Architects
Cortese Consultants
Reddo Building Surveyors

VALUE

\$375,000

PROJECT SIZE

650m²

DURATION

3 Months

COMPLETED

March 2020



The University of Melbourne John Medley Stage 2

arete Australia was appointed as the head contractor to deliver the fitout and refurbishment of multiple levels within The University of Melbourne's John Medley East Tower, an exciting live environment.

The project saw the upgrade of the Basement level bathroom, Levels 1 and 6, the lift shaft and Plant Room including;

Corridors, New Offices, Shared Space, Meeting Room, Kitchenette, Male/Female/DDA Toilets & Cleaner Rooms, Modification and Upgrade to Services.

Removal and subsequent installation of existing glazing system to level 6 as specified by the University of Melbourne.

arete worked around the university's curriculum to ensure there was minimal disruption throughout the building and school.

KEY PROJECT DETAILS

Education - Tertiary
Design & Construct
Private
Fitout

CLIENT

The University of
Melbourne

KEY CONSULTANTS

Hassell
Simon Wragg & Associates
ARUP
ADP Consulting

VALUE

\$4,000,000

PROJECT SIZE

1,100m²

DURATION

4 Months

COMPLETED

February 2020



The University of Melbourne BN183 Howard Florey Zebra Fish Facility Main Works

The University of Melbourne engaged arete Australia to complete the PC2 containment laboratory for the study of Zebra Fish within the Howard Florey Building. arete completed the early works which involved demolition and full strip out of the existing laboratory. Major items removed were the MRI Machine, the MRI Steel Encasement & the Gatic Hatch.

The main works included installation of new sewer pipe works, mechanical and electrical services, mechanical plant room, Tecniplast CLS plant room, fish tanks, reverse osmosis

plant, wash up area, emergency shower, micro injecting room, new vinyl floor and work benches and furniture.

The project team added value to this project through proactive communication with the consultants.

KEY PROJECT DETAILS

Education - Tertiary
Lump Sum
Private
Refurbishment

CLIENT

The University of
Melbourne

KEY CONSULTANTS

Brand Architects
Slattery Australia
Wallbridge Gilbert Aztec
Abdec Group

VALUE

\$1,065,000

PROJECT SIZE

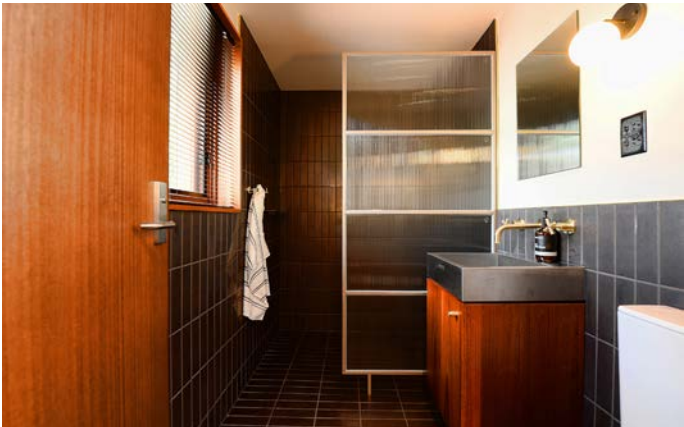
167m²

DURATION

4 Months

COMPLETED

February 2020



The University of Melbourne
Norma Redpath

arete Australia completed the refurbishment of the Norma Redpath Studio in the heart of Carlton. The site supports a partnership with the Wheeler Centre and in-residence writers' program and the Centre of Visual Arts, UoM users and partners.

The Norma Redpath studio now supports opportunities for upcoming graduate students, including CoVA Graduate Academy, comprising graduate research students from FFAM and Faculty of Arts.

The space is used for intensive thesis drafting for masters and PHD students. It also provides teaching and learning workshop opportunities. Outside of committed in-residency writers' facilities, the space is a flexible space for use by students, academics and other cultural partners.

KEY PROJECT DETAILS

Education - Tertiary
Lump Sum
Private
Refurbishment

CLIENT

The University of
Melbourne

KEY CONSULTANTS

Studio Bright
Simon Wragg & Associates
FMG Engineering

VALUE

\$280,000

DURATION

1 Month

COMPLETED

August 2019



The University of Melbourne Southbank Office Refurbishment

The Southbank Campus Renewal project required staff relocation and building upgrades, including the upgrade of the Sturt St Building 876. The space was transformed from an art studio into a fully equipped, modern office for staff, with student and public interface.

Building 876 now houses the Faculty of Fine Arts and Music (FFAM)'s Academic Services Office (ASO) and Infrastructure & Operations (I&O) team.

Photos by SAVS Photography

KEY PROJECT DETAILS

Education - Tertiary
Lump Sum
Private
Refurbishment

CLIENT

The University of
Melbourne

KEY CONSULTANTS

FPPV Architecture
Umow Lai
FMG Engineering Inc Burns
Hamilton

VALUE

\$1,820,000

PROJECT SIZE

3,533m²

DURATION

5 Months

COMPLETED

July 2019



The University of Melbourne 535 Elizabeth Street

arete completed the Design and Construct refurbishment of Levels 4 and 5 at 535 Elizabeth Street for the University of Melbourne. The new spaces consist of complete office / workspace fit out including workstations, meeting rooms, amenities and breakout areas.

KEY PROJECT DETAILS

Education - Tertiary
Design & Construct
Private
Refurbishment

CLIENT

The University of
Melbourne

KEY CONSULTANTS

Turner & Townsend Thinc
Interior Flow

VALUE

\$2,800,000

PROJECT SIZE

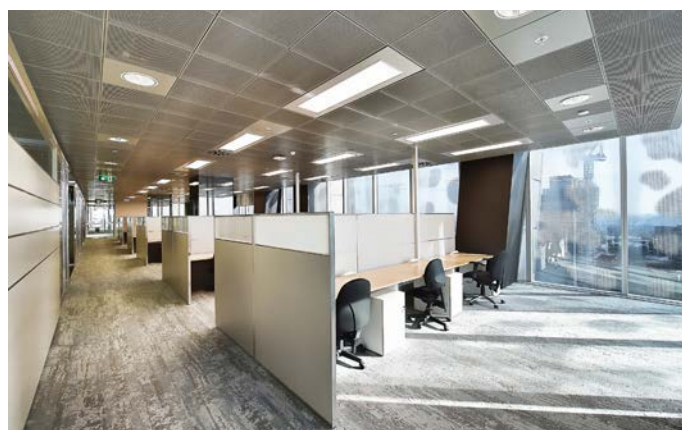
2,984m²

DURATION

5 Months

COMPLETED

April 2019



The University of Melbourne Spot Building

The University of Melbourne Spot Building project was completed over four levels within a live environment.

The early phase of the project included demolition of existing partitions, finishes and services. The fitout phase saw the installation of new services (mechanical, electrical and fire), staff offices, PHD student collaboration lounges and student offices.

The project was completed in four separable portions and arete staff worked closely with the Client to manage the works in staged handovers.

KEY PROJECT DETAILS

Education - Tertiary
Lump Sum
Private
Fitout

CLIENT

The University of
Melbourne

KEY CONSULTANTS

Hatz Pty Ltd
Slattery Australia Pty Ltd
WSP Group

VALUE

\$1,600,000

PROJECT SIZE

912m²

DURATION

4 Months

COMPLETED

January 2019



The University of Melbourne
Clinical Sciences Building

arete completed the renovation works to levels 3 to 6 within the University of Melbourne's Clinical Science Building to deliver functional PC2-compliant and OGTR-certifiable Laboratories.

KEY PROJECT DETAILS

Education - Tertiary
Lump Sum
Private
Refurbishment

CLIENT

The University of
Melbourne

KEY CONSULTANTS

Merat Architects
Wood and Grieve Engineers

VALUE

\$2,125,000

PROJECT SIZE

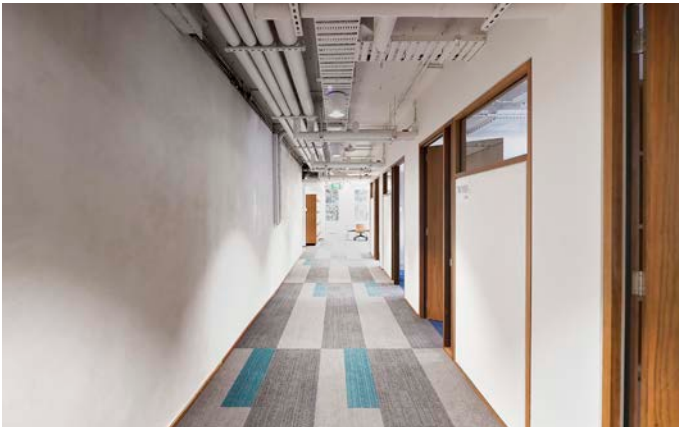
1,506m²

DURATION

6 Months

COMPLETED

January 2019



The University of Melbourne John Medley Building

The University of Melbourne's John Medley West Stage 1 involved the strip out and refurbishment of three floors within the existing tower.

The ground floor works encompassed two teaching spaces and a new computer lab while Levels 1 and 6 were fit-out to house faculty staff in individual offices and open plan collaborative spaces for students with meeting rooms.

Further works included the refurbishment of three existing bathrooms while the existing lift, previously serving Levels G to 5 was

extended to service level 6 also.

In completing the project works it was essential to bring the building in line with current fire protection compliance, as such a new fire pump and pump room were constructed in the basement with new hydrant risers installed.

The project was designed to comply with the University's sustainability criteria, utilising a hydronic heating / cooling system as well as a recycled / reclaimed waste water system.

KEY PROJECT DETAILS

Education - Tertiary
Lump Sum
Private
Multi Level
Fitout

CLIENT

The University of
Melbourne

KEY CONSULTANTS

Architectus

VALUE

\$4,600,000

PROJECT SIZE

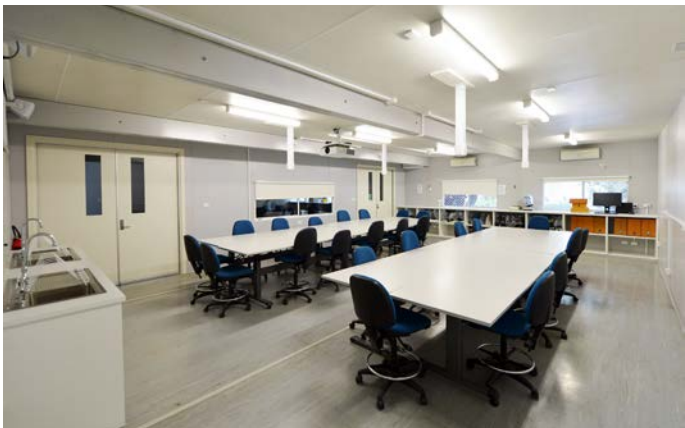
1,300m²

DURATION

9 Months

COMPLETED

July 2018



The University of Melbourne
Werribee Campus Early
Works

arete Australia completed the early works at the University of Melbourne Werribee Campus (the Faculty of Veterinary and Agriculture Science) by providing fitted out demountable units.

The demountable units were fitted out for different purposes, including: a library, seminar rooms, computer labs, laundry and exotic animal examination room.

Additional works included the internal demolition to the occupied building with services relocation and rooms fitout.

KEY PROJECT DETAILS

Education - Tertiary
Lump Sum
Private
Early Works

CLIENT

The University of
Melbourne

KEY CONSULTANTS

Billard Leece Partnership
Donald Cant Watts Corke
Jacobs Engineering Group
Umow Lai

VALUE

\$1,400,000

PROJECT SIZE

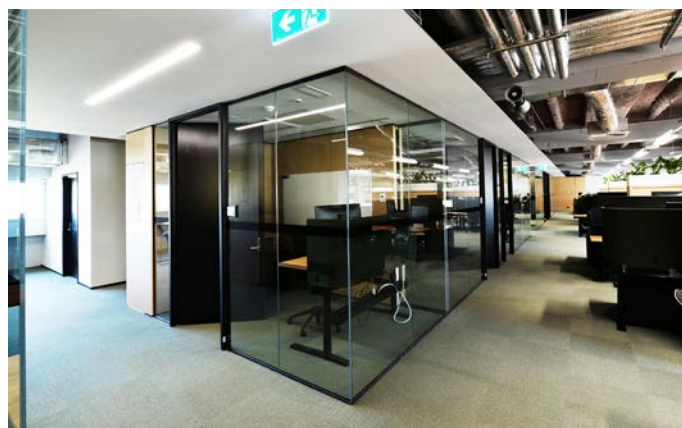
1,000m²

DURATION

5 Months

COMPLETED

November 2017



The University of Melbourne School of Engineering Building 176

arete were engaged by the University of Melbourne to undertake the Melbourne School of Engineering's Building 176, Level 3 fitout at their Parkville Campus. The floor is used as a student workspace and became the prototype for the fitout of the remaining levels.

This fitout consisted of large collaborative spaces and offices running down the centre of the floor plan. The new space is complimented by a vast joinery package with hand laminated timber veneer finishes and wall panelling to match.

The floor was crowned with American oak furniture and beautiful Corian bench tops to the breakout spaces.

KEY PROJECT DETAILS

Education - Tertiary
Lump Sum
Private
Refurbishment

CLIENT

The University of
Melbourne

KEY CONSULTANTS

Hassell

VALUE

\$3,600,000

PROJECT SIZE

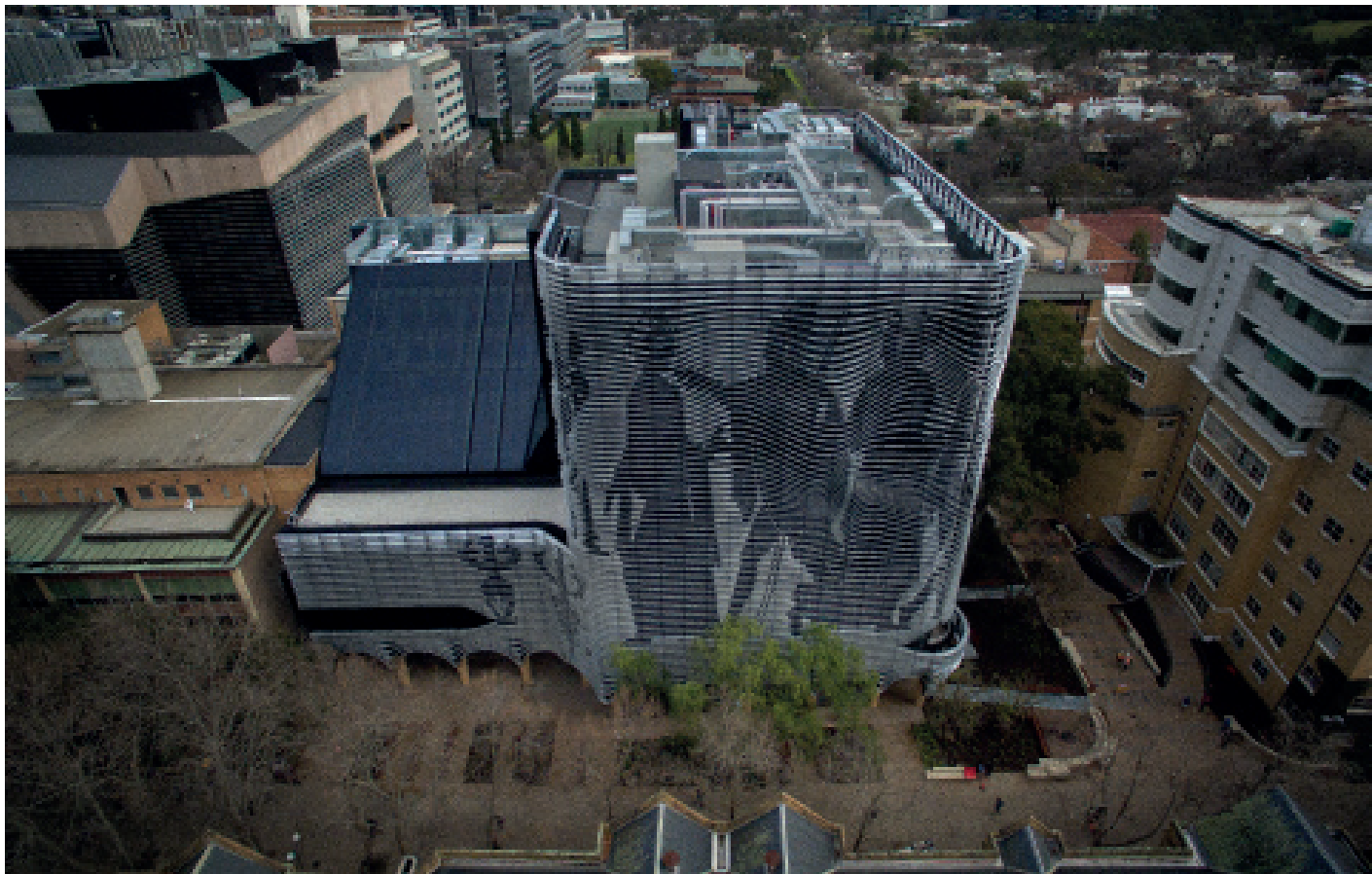
830m²

DURATION

5 Months

COMPLETED

October 2017



The University of Melbourne
Level 1 Arts West

This project consisted of the refurbishment and transformation of 250m² of existing office space into a modern, comfortable, and aesthetically stimulating work environment.

The objective of this project was to combine the client's needs with the desired employee capacity and productivity. Throughout the course of construction, arete paid close attention to addressing the multi-faced and complex needs of this project. As a result, some key features include: implementing a featured carpet

tile product in the stair lock area, creating individualised partition offices for senior management, reinstating defective ceiling tiles, and quality designer workstations.

In addition to satisfying the architectural designs, several building service milestones were also accomplished. This includes: reactivation of the HVAC system, installing new double GPO's and soft-wiring to workstations, and completing the fire isolation services between the Arts West, West Wing and the greater North Wing space.

KEY PROJECT DETAILS

Education - Tertiary
Lump Sum
Private
Refurbishment

CLIENT

The University of
Melbourne

VALUE

\$200,000

PROJECT SIZE

250m²

DURATION

2 Months

COMPLETED

January 2017



The University of Melbourne
Food Sensory & Meat
Testing Facility

The University of Melbourne's Food Sensory & Meat Testing Facility (FSMT) is the integrated fitout of 610m² on the ground floor level of Building 184 at the University's Parkville Campus.

The fitout included the installation of sandwich panel Cold Rooms, Freezer Rooms, and a Commercial Kitchen. Testing facilities included briefing and group tasting rooms that can be combined through operable walls with the Sensory Laboratory. Separate meat testing, Anteroom, Dry Lab Cold and Freezer Room for the Meat

Laboratory completes the overall floor plan.

The Sensory Laboratory included individual testing pods with integrated pass through hatches from servery areas for individual trials, assessments and question and answer time during testing sessions.

Mechanical, electrical and hydraulic systems, stainless steel benches and full vinyl floors complete the PC2 equivalent standards.

KEY PROJECT DETAILS
Education - Tertiary
Lump Sum
Private
Fitout

CLIENT
The University of Melbourne

KEY CONSULTANTS
Merat Architects

VALUE
\$2,700,000

PROJECT SIZE
610m²

DURATION
4 Months

COMPLETED
December 2016



The University of Melbourne
Digital Studios Laboratory

The Digital Studios Laboratory project was part of the wider Arts West Redevelopment completed by Kane Constructions at The University of Melbourne.

The Digital Studios Laboratory involved the refurbishment of Levels 2 and 3 of the Nineties Building. New facilities include e-teaching, collaborating and research areas - with surface projection, immersive screens

and state-of-the-art audio visual facilities. An Exhibition Area with an interactive floor was designed to be a key feature of the space.

arete were brought on early to assist with design and buildability, successfully completing the works on time and on budget.

KEY PROJECT DETAILS

Education - Tertiary
Design and Construct
Private
Fitout

CLIENT

The University of
Melbourne

KEY CONSULTANTS

Architectus
Aurecon

VALUE

\$3,000,000

PROJECT SIZE

860m²

DURATION

4 Months

COMPLETED

August 2016



Victoria University General Teaching and Specialist Spaces

arete's Victorian team were engaged to complete the refurbishment of 19 spaces for Victoria University across 5 of their campuses. The new spaces assisted Victoria University in the roll out of their new Block Teaching Model in semester 1 of 2020.

The project team worked across 8 sites at a time to meet the contract completion date of February 2020. Works included demolition and relocation of internal walls to create new spaces, installation of carpet

tiles, acoustic ceiling tiles and Joinery.

On top of the refurbishment of the new spaces, the team successfully installed over 40 screens across the 5 campuses which will run on a new IP system to support the 2020 block teaching model.

KEY PROJECT DETAILS

Tertiary Education
Lump Sum
Private
Refurbishment

CLIENT

Victoria University

KEY CONSULTANTS

AECOM
DS Architects
Wilde and Wollard Pty Ltd
JBA Consulting Engineers
Design Guide

VALUE

\$3,200,000

PROJECT SIZE

1,600m²

DURATION

3 Months

COMPLETED

February 2020

Victoria

ADDRESS

arete Australia Pty Ltd
658 Church Street
Richmond VIC 3121

PO Box 185
Richmond VIC 3121

TELEPHONE

03 8420 1200

CONTACT

Jonathan Angelopoulos
Business Development Manager

jange@kane.com.au
0430 369 499

Queensland

ADDRESS

arete Australia Pty Ltd
14 Fox Street
Albion Qld 4010

PO Box 200
Albion Qld 4010

TELEPHONE

07 3054 1555

CONTACT

Steve Bowers
General Manager Queensland

sbowers@arete.com.au
0417 553 196